



**Specification**

**Rate**  
Adjustable  
Max (LB4): 400 Nm/rad/s  
(3500 lbf.ins/rad/s)

**Angle of travel**  
240° ± 5°  
External end stops must be provided

**Max. safe torque**  
1400 lbf.ins / 160 Nm  
Continuous power dissipation not to exceed 80W at 20°C ambient

**Max. shaft end load**  
5 lbf / 22 N

**Max. shaft side load**  
200 lbf / 890 N

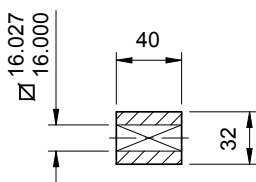
**Ambient temperature range**  
0°C to 60°C

**Frictional torque**  
5 lbf.ins / 0.5 Nm typical

**Shaft material**  
Stainless steel 441S49

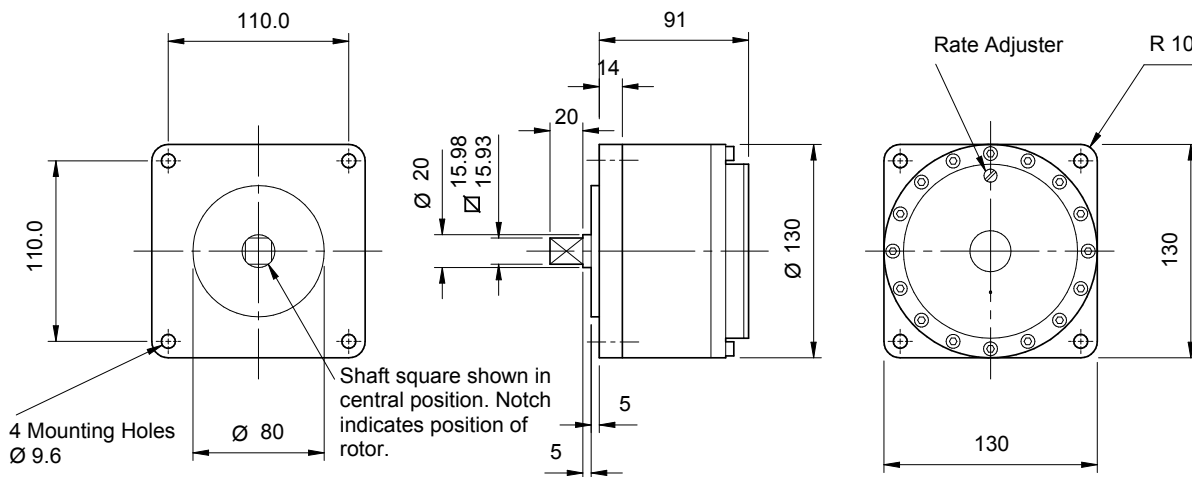
**Body material**  
Zinc alloy Ilzro 16

**Weight**  
13.5 lbs / 6.14 kg



OPTIONAL COUPLING

Dimensions in mm



**Rates**

An adjuster permits any damping rate to be obtained within one of the following ranges. The range must be specified when ordering the dashpot.

- **LB1:** 35 to 350 lbf.ins/rad/s / 4 to 40 Nm/rad/s
- **LB2:** 71 to 710 lbf.ins/rad/s / 8 to 80 Nm/rad/s
- **LB3:** 150 to 1500 lbf.ins/rad/s / 17 to 170 Nm/rad/s
- **LB4:** 350 to 3500 lbf.ins/rad/s / 40 to 400 Nm/rad/s

With adjuster set to maximum the rate may exceed stated maximum and with adjuster set to minimum the rate may be less than stated minimum.

**Options**

The following features may be specified for any model:

**Differential Rate (FC or FAC)**

Gives a large resistance in one direction only and less than 1/10 resistance in the other. Specify free clockwise or free anticlockwise when viewed from shaft end.

**Double Damping (DD)**

Gives equal resistance in either direction.

**Couplings**

Steel couplings are available as an option.

**Ordering Codes**

- LB1, 2, 3 or 4 – DD
- LB1, 2, 3 or 4 – FC or FAC

