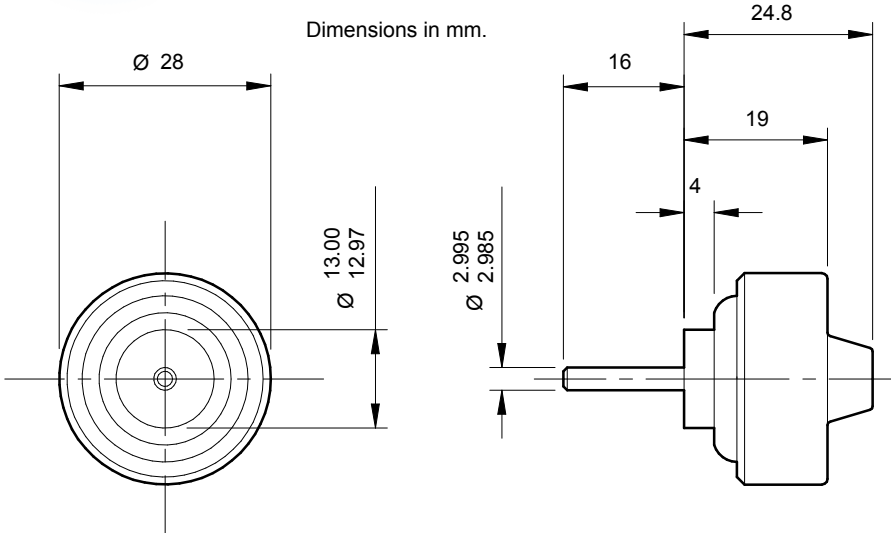
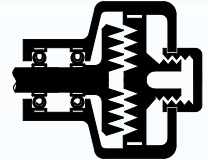


Model N - CRD CR Dashpot



Specification

Rate
Fixed - see curves left
($\pm 10\%$)

Max. safe torque
3.5 lbf.ins / 0.4 Nm

Max. shaft end load
3 lbf / 13 N

Max. shaft side load
2.2 lbf / 10 N

Ambient temperature range
0°C to 60°C

Low frictional torque
0.015 lbf.ins / 0.002 Nm
typical

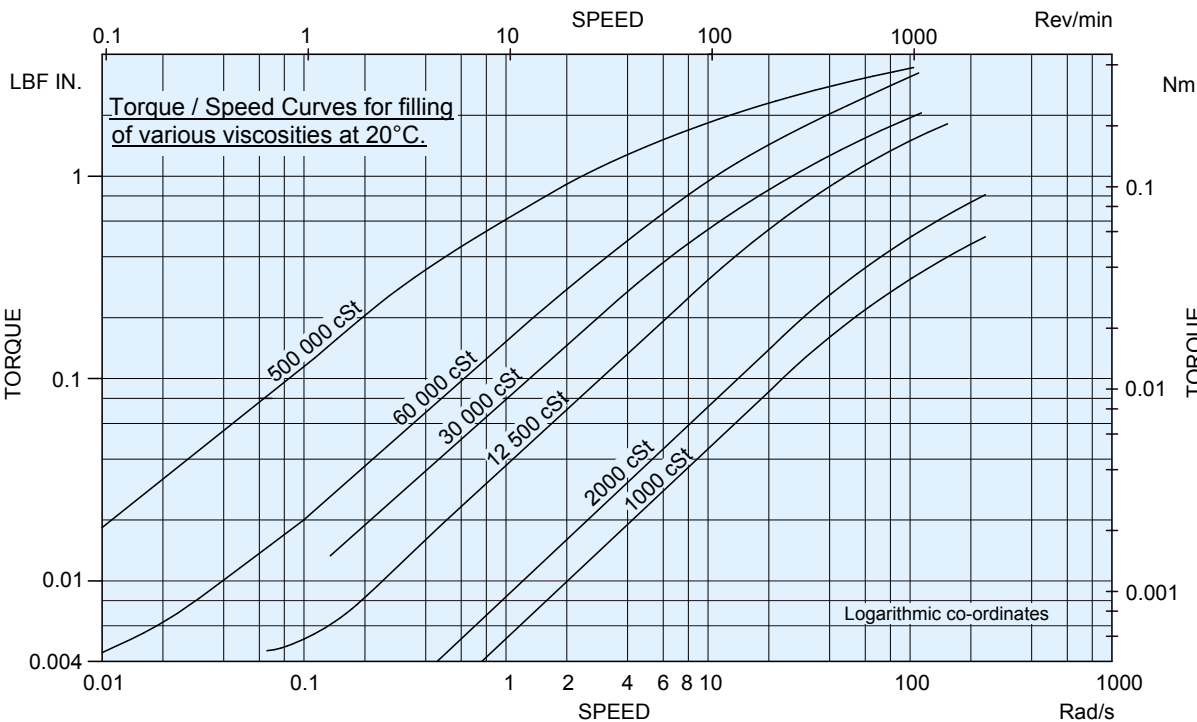
Shaft material
Stainless steel 431S29

Body material
Zinc alloy Mazak 3

Weight
0.075 lbs / 34 g

Applications

Particularly suited to instrument and small precision machine applications. Pure viscous damping is produced by shear of a film of silicone fluid. The drum type rotor is supported at both ends by miniature ball races. Typical applications include tension control, damping moving parts in small precision machines and detection of shaft rotation.



Viscosities Available

1,000; 2,000; 5,000; 12,500; 30,000; 60,000; 500,000 cSt.

Specification of fluid viscosity provides torque/speed characteristics shown by the curves above.

Ordering Codes

N - CRD - (Filling Viscosity)

Example:

N - CRD - 60,000 has a 60,000 cSt filling.