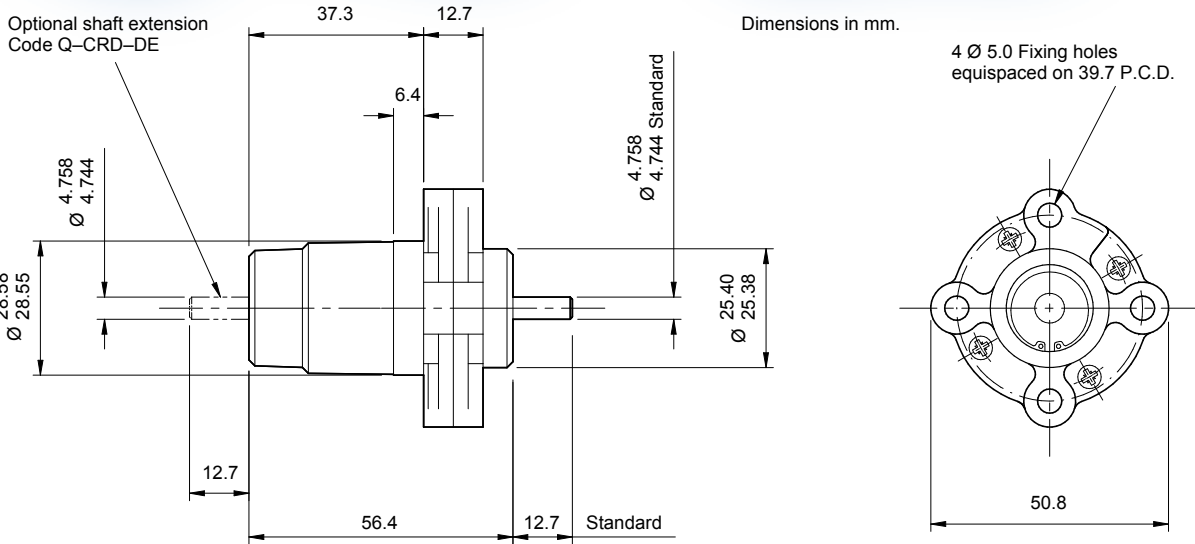
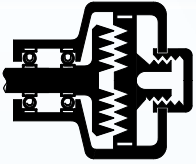


Model Q - CRD CR Dashpot



Specification

Rate
Fixed - see curves right
(± 10%)

Max. safe torque
13 lbf.ins / 1.5 Nm

Max. shaft end load
20 lbf / 89 N

Max. shaft side load
5.2 lbf / 23 N

Ambient temperature range
0°C to 60°C

Frictional torque
0.025 lbf.ins / 0.003 Nm typical

Shaft material
Mild steel 220M07

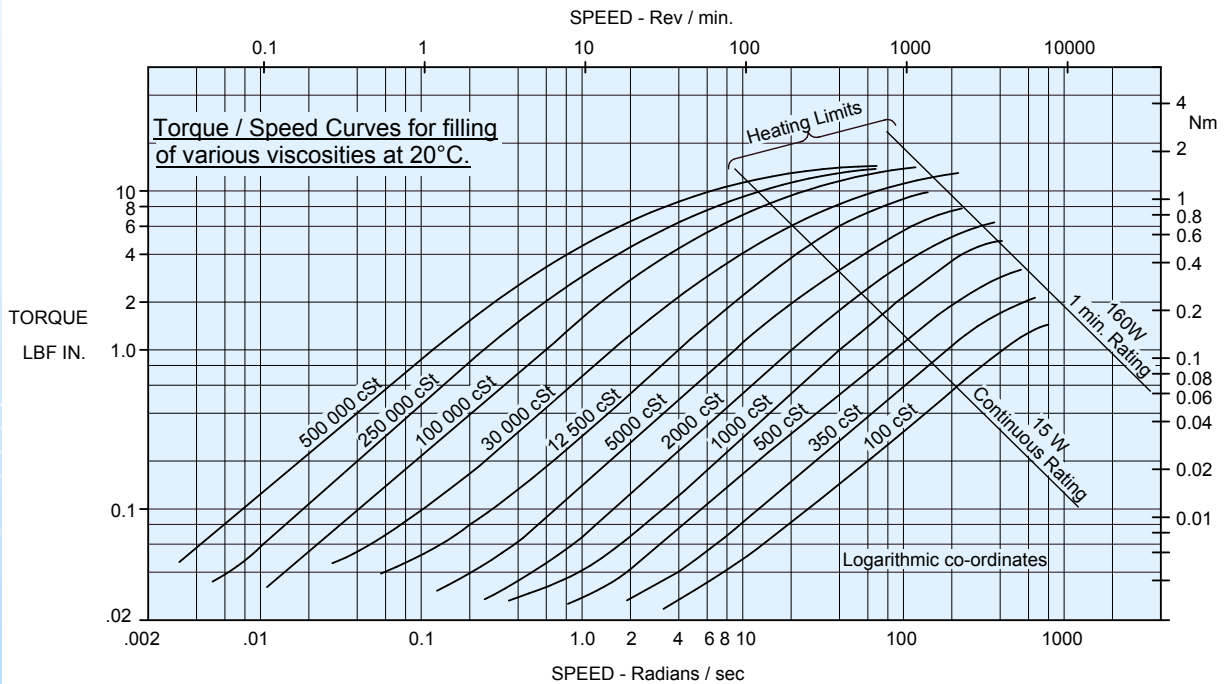
Body material
Zinc alloy Mazak 3

Weight
7.5 ozs / 214 g

Applications
Proves to be economical where use of the larger adjustable rate models may not be justified.

This dashpot is available with double ended shaft (code suffix -DE). In this version, due to the extra shaft seal, there is greater stiction torque (less than 0.025 lbf.ins/seal).

Applications



Viscosities Available

100; 350; 500; 1,000; 2,000; 5,000; 12,500; 30,000; 100,000; 250,000; 500,000 cSt.

Specification of fluid viscosity provides torque/speed characteristics shown by the curves above.

Ordering Codes

Q - CRD - (Filling Viscosity)

Example:

Q - CRD - DE - 12,500 is double ended and has a 12,500 cSt filling.